

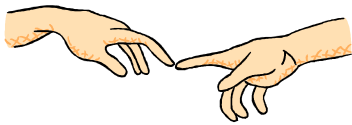


Sensory Processing Difficulties

Date: 24th April 2018

Venue: Speenhamland School

9am – 11.00 am



This workshop focuses on understanding Sensory Processing and how it can affect our children with SEND. The workshop is aimed at parents to enable them to share. Strategies will be given on how to support children access the stressful environments they face.

**Presenters:
Melissa Hutchings**

Please contact the office to book a place

Contact Details:

Melissa Tel: 01635 503652 or

melissa.hutchings@westberks.gov.uk



West Berkshire
C O U N C I L