

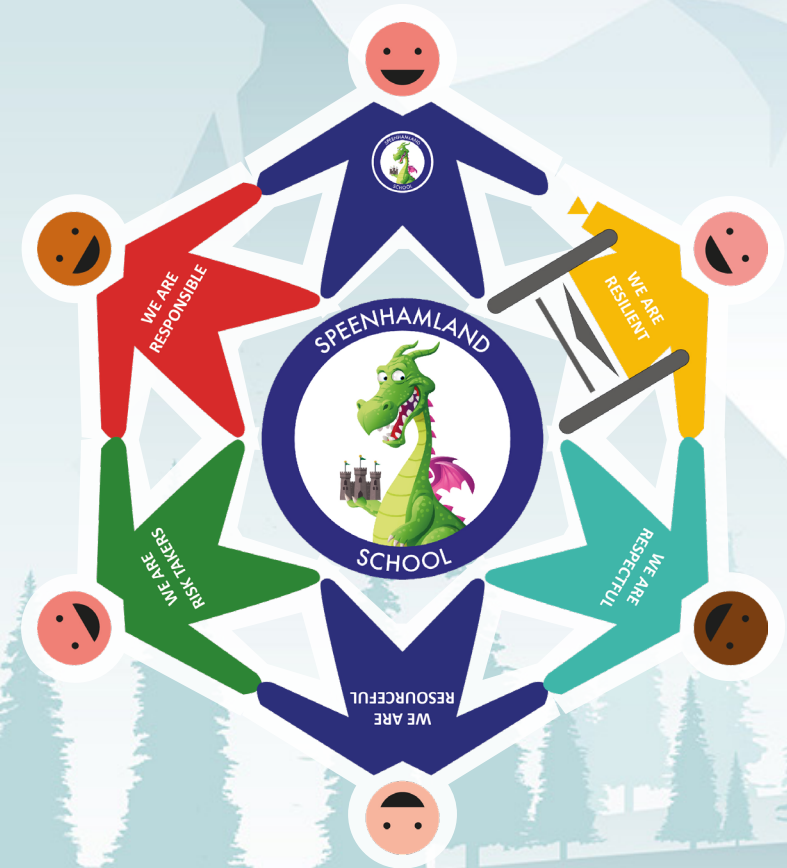
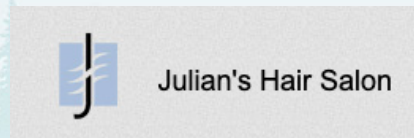
Winter Fair

3rd Dec 2022, 12:00 – 2:00

Thank you to our kind sponsors
who helped make this event happen:



LUSSO



Programme

A message from our Headteacher

As the mornings become frosty, the nights get longer, and our pupils dig out their favourite coats and hats – the Winter season is most definitely upon us! For all of us here at Speenhamland, this really is the most magical time of year: not just while we wait for cheery old St. Nick and his reindeer, but because it's our chance to celebrate what makes our school truly great – our community.

We're incredibly proud of how hard all the children have been working – but in the spirit of this holiday season, we're most proud of the spirit our pupils bring every day: to be caring, helpful, compassionate, and friendly.

With that in mind, our Winter Fair is our chance to give a little back to you. There's lots in store for you to find – tasty warm food, delicious drinks, exciting stalls (which all the classes have worked hard to put together for you), and much more. I even hear a certain Mr. Claus may make an appearance for those who would like to meet him...

Thank you again for your support, and we hope you have a wonderful Winter Fair – and a very happy holidays!

– Mrs. Julie Lewry
Headteacher

Grand Prize Raffle Draw - 1:45pm

A huge thank you to everyone who sold or bought one of our raffle tickets to raise money for our Library project.

Don't miss the prize draw at 1:45pm – good luck to everyone playing!



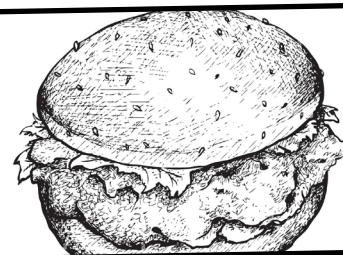
Food and Drink

Exploring a winter wonderland is best done on a warm, full stomach! **Visit the lunch hall** to find all that's on offer:

Refreshments

Hittin' the dusty trail is thirsty work! We've got you covered, partner:

Water / Hot Drinks	50p
Soft Drinks	£1.00
Mulled Wine	£1.50



Warm Food

Why not sit and warm up with a tasty hot lunch, ready to explore some more!

Christmas Turkey Roll	£2.50
Vegetarian Hot Dog	£2.50
+ add a soft drink	+50p

Snacks

It's nearly Christmas – go on, why not treat yourself to a tasty snack!

Mince Pies	50p
Crisps & Snacks	30p



Guess the Flavour!

If you're feeling adventurous, we've got a mystery hot chocolate flavour waiting for you! Have a guess and win a prize at the end of the fair!

Entertainments

There's even more to see and do while you're exploring our winter wonderland! Make sure you take time to check out all these:

Craft Stalls

Some of our talented parents and friends of the school are selling their crafts and homemade goods. Check out their stalls in the hall - to support both our school and local entrepreneurs!



Teddy Tombola

Draw a ticket, win a Teddy from one of the piles!
£1.00 per go - PRIZE EVERY TIME!

Sweet Tombola

Tickets ending in 0 or 5 get a delicious prize!
£1.00 for 3 tickets

Bottle Tombola

Tickets ending in 0 or 5 get a bottle!
£1.00 for 3 tickets

Secret Room

Psst... Hey, kids! NO GROWNUPS ALLOWED HERE!
For just £1 you can visit and find a present for a special grown up in your life, wrapped and ready!



Some things to know

We're so pleased you decided to join us at our Winter Fair! There are a few things you should know to help make your visit great:

Tokens and Money

Our classes have made some amazing entertainments and stalls for you to try: if you want to give them a go, you'll need to buy some colourful "Trodon Tokens":
5 tokens cost £1.00, and each stall costs 1 token per go.

Tokens are just used for class stalls - the tombolas, food and drink, and craft stalls all accept normal money.

Santa's Grotto

Over in Miss Hipgrave's class (look for the building with the colourful fence!), we have a special visitor - Old. St Nick!

Because he's very popular, you need a ticket to visit. If you haven't bought one already, there might be some spare on the day - head over to find out more!



Exploring Winter

There's lots to see and do here - but because it's quite chilly, everyone will be inside.

Food and Drink is in the Lunch Hall, while **Craft Stalls, Tombola and the Raffle** will be in the hall.

All the **class stalls** are in classrooms or the hall.



Class Stalls

Come and visit the amazing stalls our classes have built for you. Each stall costs 1 token, and is run by one of our brilliant classes!



Cherry: Pin the Nose on Rudolph

Get Rudolph's bright red nose ready to guide Santa's Sleigh!

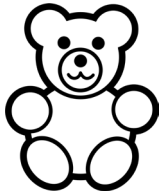
Find us in Ash Classroom



Oak: Pick a Snowman's Nose

What surprises will you find in the poor Snowman's nose?!

Find us in Ash Classroom



Ash: Name the Teddy Bear

Can you guess the name of the teddy bear for a big prize?

Find us in Ash Classroom



Hawthorn: Lucky Dip

If you're feeling lucky, come try your chances with the Lucky Dip!

Find us in Hawthorn Classroom



Maple: Find Santa

Where is Cheeky Santa hiding? Find him for a nice treat!

Find us in Hawthorn Classroom



Juniper: Hook - a - Bauble

Catch some festive cheer with this exciting game of skill!

Find us in Hawthorn Classroom



Redwood: Hoopla

How many rings can you land in this exciting christmassy game?

Find us in The School Hall



Acer: Balls in Buckets

Get your aim ready for Snowball Season with this fun game!

Find us in The School Hall



Cedar: How Many Sweets in a Jar?

Can you guess how many sweets are in the jar? You will be surprised!

Find us in The School Hall